

SureColor™ SC-F2100 Direct to Garment printer

Exceptional quality  
every time



**EPSON®**  
EXCEED YOUR VISION

# Our innovation drives your creation

If you're looking for a DTG (Direct to Garment) printer that offers top quality and enables high productivity, look no further than the SureColor SC-F2100 from Epson.

Whether you're an ambitious start-up creating unique items on demand, or an established business producing high volumes of garments, the SureColor SC-F2100 will help take your business forward. As our latest and most advanced DTG printer, it delivers the kind of reliability, efficiency and cost savings that almost any business can benefit from.

At Epson, we've been setting the standards of print innovation for a long time. While some manufacturers outsource the development of their components, we do everything in house.

As a total solutions provider, each element of the SureColor SC-F2100 has been designed and created by us. From the printhead to the ink itself, everything works in harmony to deliver the best possible performance – enabling you to execute high quality t-shirt printing with ease.



## Key benefits at a glance

**Adapts easily to customer demands** – print on a range of garment styles and other items

**Reproduce vibrant colours** – intensify your printed designs onto white and coloured garments

**Works harder** – get more out of the printer and consequently boost your sales

**Drives business forward** – reduce errors and increase reliability

**Offers state-of-the-art engineering** – benefit from high quality components





# Stunning results, every time

Components within the SureColor SC-F2100 have been built with precision to deliver quality. Our state-of-the-art engineering combines with our own developed software to consistently produce vibrant, high quality and striking print results leaving you to focus on building your business.

## Impressive accuracy

The SureColor SC-F2100 offers our most precise platen yet – which makes printing onto t-shirts, hoodies, and tote bags simple. The accurate fabric platen is designed for easy garment loading and allows you to quickly adapt to customer requirements.

## A harmonised printing solution

Every single aspect of the SureColor SC-F2100 has been carefully considered to ensure quality at each stage of the print process:

PrecisionCore TFP printhead for consistently stunning results

Multi-dot print and a wider colour gamut for improved image reproduction

White and colour double strike mode for more efficient throughput

Improved white circulation for quick start-up

RGB and CMYK profile support to suit however you work

## 30% faster printing on coloured garments

Benefit from an increase in productivity with new high-speed printing modes, for a faster output. Double strike mode allows you to print white and colour on coloured garments during the same pass, creating a high-quality colour print in a fraction of the time.

Official Team Partner



"We love the new print modes on the SureColor SC-F2100. The colours are more intense and the detail in the print is so good printed images look almost realistic!"

Moreau Alexandre, PDG, Alchimistes



Easy to use, simple to maintain. Benefit from the range of innovative features for reliability, time and time again.



Improved operation with the auto maintenance function – for when downtime isn't an option



Stay productive, quick circulation of white ink means that the printer is ready for production when you need it



Reduce downtime when an issue occurs by introducing buzzer alerts to call for an operator to intervene



Maintain a clean printhead with the integrated Fluff Dust Catcher and cap-cleaning unit



Quality screening for smoother reproduction of images and a wider colour gamut, visibly enhancing results, especially photographic images



Feel reassured that Epson UltraChrome DG ink and pre-treatment are certified to be safe for adults and children, including babies, according to international safety standards<sup>1</sup>

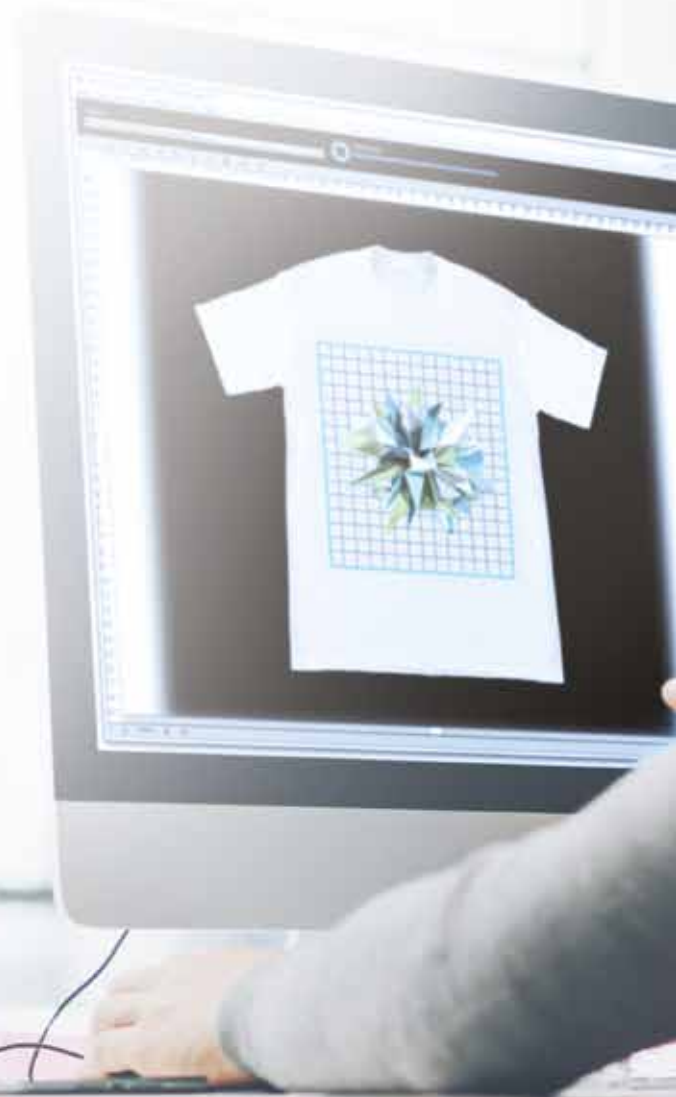


# Transform your designs into breathtaking prints

Our Garment Creator software makes it easy to design and create eye-catching prints. Its simple interface and intuitive navigation allows you to save predefined colour management and layout control presets – making it easy to deliver consistently excellent results.

Garment Creator software comes as standard with the SureColor SC-F2100 and enables you to:

- Use intuitive GUI with easy or advanced user views
- Input text and create text designs
- Manipulate multiple images within one design
- Edit functions, such as scale, rotate and flip
- Create user presets for consistent designs
- Replace colour with white, spot or transparency
- Support both RGB and CMYK colour profiles
- Export files for USB direct print
- Access the Hot Folder to quickly batch print your designs
- Display white preview mode
- Get a cost estimate before you send a job to the printer
- Check printer status and maintenance functions





“With the Garment Creator software I am able to manipulate multiple images and edit text easily, saving time and money as minor design changes no longer need to be outsourced.”

Moreau Alexandre, PDG, Alchimistes

## Product specifications

<b>Printhead</b>	<b>Type</b>	Epson PrecisionCore TFP	
<b>Print speed (default)</b>	<b>Dual CMYK colour mode</b>	15sec	
	<b>Single CMYK colour mode</b>	27sec	
	<b>CMYK + white mode</b>	87sec	
<b>Max. resolution</b>		Colour 1440 × 720dpi, white 1440 × 1440dpi	
<b>Ink type</b>	<b>Ink cartridge capacity</b>	UltraChrome DG ink	600ml
<b>Media</b>		100% cotton or blended materials with a minimum of 50% cotton	
<b>Connectivity</b>	<b>Rear</b>	USB2.0, 100-BaseTX	
	<b>Front</b>	USB memory slot (USB2.0)	
<b>Power supply</b>		AC 100-240V 50/60Hz	
<b>Supported OS</b>	<b>Garment plugin</b>	Windows® 7-64bit, Windows® 10, Mac OS 10.6 or higher	
	<b>Adobe® plugin</b>	Plugin available for Adobe Photoshop® and Illustrator®	
<b>Dimension</b>	<b>WxDxH</b>	<b>Weight</b>	985 × 1,425 × 490mm Approx. 82kg
<b>Platen</b>		Medium platen 356 x 406mm standard	
<b>Warranty</b>		1 year onsite service	

## Ink and consumables

UltraChrome DG Cyan (600ml)	C13T725200
UltraChrome DG Magenta (600ml)	C13T725300
UltraChrome DG Yellow (600ml)	C13T725400
UltraChrome DG Black (600ml)	C13T725100
UltraChrome DG White (600ml)	C13T725A00
Waste ink bottle	C13T724000
Singlepack cleaning cartridge	C13T736000
Pre-treatment liquid	C13T736100
Maintenance kit	C13T736200
Head cleaning set	C13S092001
Air filter	C13S092021
Large platen grip pad	C13S210075
Medium platen grip pad	C13S210076
Small platen grip pad	C13S210077

## Options

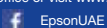
Large platen 406 x 508mm	C12C933921
Medium platen 356 x 406mm	C12C933931
Small platen 254 x 305mm	C12C933941
Extra small platen 178 x 203mm	C12C933951
Medium Groove (Polo) platen 356 x 406mm	C12C933961
Sleeve platen 102 x 102mm	C12C933971
Pre-treatment roller set	C12C891201
Replacement rollers for pre-treatment (3 pieces)	C12C891211
Hard roller	C12C891221



<sup>1</sup> ECO PASSPORT by OEKO-TEX® is a system by which textile chemical suppliers demonstrate that their product can be used in a sustainable textile production. Epson UltraChrome DG ink and pre-treatment are certified by the Eco Passport. This is an international safety standard in the textile industry. It is certified to be safe for adults and children, including babies.

For further information please contact your local Epson office or visit [www.epson-europe.com](http://www.epson-europe.com)

**Epson Middle East**  
P.O. Box 371567, Dubai  
United Arab Emirates  
Telephone: +9714 2677638  
[www.epson-middleeast.com](http://www.epson-middleeast.com)



Trademarks and registered trademarks are the property of Seiko Epson Corporation or their respective owners.  
Product information is subject to change without prior notice.

**EPSON®**